



PURE DRIVING







# Contents

Landsail LS288	7
Landsail LS388	9
Landsail LS588 UHP	11
Landsail LS988	13
Landsail LSV88	15
Landsail CLV2	17
Landsail LS588 SUV	19
Landsail Runflat	21
Landsail Winterlander	23
Landsail Winterstar	25
Landsail Snowstar	27
Landsail 4-seasons	29
Landsail 4-seasons Van	31







## Landsail tyres, a wide choice!

**The Landsail LS288** is a modern passenger car tyre with a balanced and optimised tread. The tyre combines safety with comfortable handling.

**The Landsail LS388** is a passenger car tyre with a tread designed specifically for sporting medium-range cars.

**The Landsail LS988** is an Ultra High Performance tyre of very high quality. This tyre was specially developed for large and fast medium-range cars and cars in the top segment.

**The Landsail LSV88** is an impressive delivery van tyre that can stand hard wear. The reinforced carcass combined with the sturdy tread makes this tyre an impressive and reliable partner.

**The Landsail CLV1** is an SUV tyre in the top segment.

**The Landsail CLV1** guarantees comfortable and safe driving in all weather conditions.

**The Landsail CLV2** was developed for heavy SUVs. The reinforced composition and the unique tread design make the tyre extremely suitable for large SUVs. The Landsail CLV2 is a class of its own in SUV tyres.

**The Landsail Winterlander** is a winter tyre for passenger cars and guarantees optimal performances, even in extreme wintry conditions.

**The Landsail Snow Star** is a winter tyre designed specially for heavy-duty work. The optimised rubber compound also remains flexible at very low temperatures due to the addition of silica.





**The Landsail Winterstar** is an SUV winter tyre for the top segment and combines comfort with safety. The flexible rubber compound improves road holding and maximises braking on wet and snowy surfaces. The Landsail Winterstar guarantees many safe winter kilometres.

### **Manufactured according to the latest technologies!**

The latest technologies are used for the production of Landsail tyres, which is why these tyres roll off state-of-the-art production lines. The rubber compound is a balanced blend of raw materials that largely determines the quality of the end product.

The available treads range from simple but effective to ingenious and well thought-out and therefore deliver maximum performance. The Landsail tyres are available

in a wide range of types and sizes. There is a tyre for both the medium-range car and the heavy luxury SUVs. A powerhouse has also been developed for the heavy-duty work.

All Landsail tyres are characterised by a special tread composition which has the prevention of aquaplaning and an effective water dispersion as priority. This ensures optimum grip in most conditions, even during sudden braking and emergency manoeuvres.

### **Landsail, for many safe kilometers!**



# LS 288





## Landsail LS288

The Landsail LS288 is a modern passenger car tyre with a balanced and optimised tread.

The wide, continuous longitudinal grooves are connected by the lateral diagonal grooves. Combined with the specially designed, rapid water-dispersing transverse grooves on the shoulder, maximum grip is retained and the chance of aquaplaning significantly reduced.

The composition of the tread also effectively reduces rolling and contact noises produced by contact of the tyre with the road surface.

The Landsail LS288 combines safety with comfortable handling.

Series	75, 70, 65, 60, 55, 50, 45
Rim inches	13,14,15,16
Speed rate	T,H,V,W
Typical vehicle matches	Ford Focus, Seat Leon, Honda Accord, Mazda 3, Audi A3, A4, Volkswagen Golf, Passat, Toyota Corolla, Opel Astra, Renault Megane, Peugeot 307, BMW 3 Serie, Citroen Picasso, Mercedes C klasse



**Silent lateral groove**  
Any tire section remains the same void of area, effectively decreased "pump" noise level.

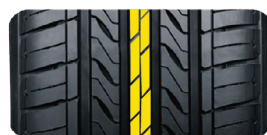


**Optimized pitch alignment**  
Optimized pitch alignment and offset between 2-side pitch lines avoid resonance and provide silent driving conditions.

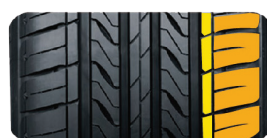


**Straight-line driving stability**  
3 continuous circumferential ribs can provide excellent straight-line stability and resist irregular tread wear.

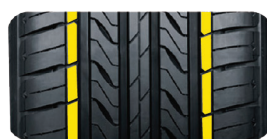
Size	XL	Load	Speed				
<b>70 Series</b>							
195 / 70 R14		91	H	C	C	2	70
205 / 70 R14		98	H	C	C	2	70
<b>60 Series</b>							
175 / 60 R14		79	H	E	B	2	70
<b>55 Series</b>							
185 / 55 R15		82	V	C	C	2	70
185 / 55 R16		83	V	E	B	2	70
195 / 55 R16		87	H	E	C	2	70
195 / 55 R16		87	V	E	C	2	70
<b>45 Series</b>							
195 / 45 R16		84	V	E	C	2	70



**Solid continuous centering rib**  
Ensures straight-line driving stability. And small lateral grooves improve high-speed performance.



**Heat-releasing design**  
Fashionable variable-pitch shoulder design effectively decrease resonance. Moreover, diamond shape and kerfing design forms an optimal heat-releasing feature.



**Bars in shoulder area resisting irregular tread wear**





# LS 388





## Landsail LS388

The Landsail LS388 is a passenger car tyre with an optimised tread for the sporting medium-range cars. The four wide longitudinal grooves ensure rapid and adequate water dispersion whilst retaining grip on wet road surfaces.

The composition of the tread also effectively reduces the rolling and contact noises produced by the contact surface of the tyre with the road surface. The special shoulder design improves road holding in the bends and provides stability during high speeds.

Series	70, 65, 60, 55, 50, 45
Rim inches	13,14,15,16,17,18
Speed rate	T,H,V,W
Typical vehicle matches	Ford Focus, Seat Leon, Honda Accord, Mazda 3, Audi A3, A4, Volkswagen Golf, Passat, Toyota Corolla, Opel Astra, Renault Megane, Peugeot 307, BMW 3 Serie, Citroen Picasso, Mercedes C klasse



### Solid continuous centering rib

The solid continuous centering rib ensures straight-line driving stability.



### Combined horizontal and longitudinal

Combined grooves with different thickness can effectively destroy the water film and enhance the wet grip performance.



### Optimized pitch alignment

Optimized pitch width and alignment with computer simulation avoid resonance and provide silent driving conditions.

Size	XL	Load	Speed				
<b>70 Series</b>							
145 / 70 R13		71	T				
155 / 70 R13		75	T				
165 / 70 R13		79	T	C	C	2	68
175 / 70 R13		82	T	C	C	2	68
165 / 70 R14		81	T	C	C	2	68
165 / 70 R14		81	H	C	C	2	68
175 / 70 R14		88	H	B	C	2	68
175 / 70 R14		88	T	B	C	2	68
215 / 70 R15		98	H	B	C	2	68
<b>65 Series</b>							
155 / 65 R13		73	T				
165 / 65 R13		77	T	C	C	2	68
155 / 65 R14		75	T				
165 / 65 R14		79	H	C	C	2	68
165 / 65 R14		79	T	C	C	2	68
175 / 65 R14		82	H	C	C	2	68
175 / 65 R14		82	T	C	C	2	68
185 / 65 R14		86	H	C	B	2	68
185 / 65 R14		86	T	C	B	2	68
175 / 65 R15		84	H	C	C	2	68
175 / 65 R15		84	T	C	C	2	68
185 / 65 R15		88	H	B	C	2	68
185 / 65 R15		88	T	B	C	2	68
195 / 65 R15		91	H	B	C	2	68
195 / 65 R15		91	V	B	C	2	68
205 / 65 R15		94	H	B	C	2	68
215 / 65 R16		98	H	C	C	2	70
<b>60 Series</b>							
165 / 60 R14		75	T	C	C	2	68
165 / 60 R14		75	H	C	C	2	68
185 / 60 R14		82	H	C	C	2	68
195 / 60 R14		86	H	C	C	2	68
175 / 60 R15		81	H	C	C	2	68
185 / 60 R15		84	H	C	C	2	68
195 / 60 R15		88	H	C	C	2	68
195 / 60 R15		88	V	C	C	2	68
205 / 60 R15		91	V	B	C	2	68
205 / 60 R16		92	H	B	C	2	68
205 / 60 R16		92	V	B	C	2	68
215 / 60 R16		95	V	B	C	2	68
215 / 60 R16		95	H	B	C	2	68
225 / 60 R16		98	H	B	B	2	68
215 / 60 R17		100	W	B	B	2	68
225 / 60 R18		100	W	B	B	2	68
<b>55 Series</b>							
195 / 55 R15		85	V	C	B	2	68
195 / 55 R16	XL	91	W	B	B	2	68
205 / 55 R16		91	V				
205 / 55 R16	XL	94	W	B	B	2	68
205 / 55 R16		91	W	B	B	2	68
215 / 55 R16		97	W	B	B	2	68
225 / 55 R16		99	W	B	B	2	68
215 / 55 R17		98	W	B	B	2	68
225 / 55 R17		101	W	B	B	2	68
235 / 55 R17		103	W	B	B	2	68
225 / 55 R18		102	W	B	B	2	68
<b>50 Series</b>							
195 / 50 R15		82	V	C	B	2	68
195 / 50 R16		84	V	C	B	2	68
205 / 50 R16		87	W	C	B	2	68
215 / 50 R17		95	W	B	B	2	68
225 / 50 R17		98	W	B	B	2	68
<b>45 Series</b>							
225 / 45 R17		94	W	B	B	2	68
225 / 45 R18		95	W	B	B	2	68
235 / 45 R18		98	W	B	B	2	68
245 / 45 R18		100	W	B	B	2	68
<b>40 Series</b>							
225 / 40 R18		92	W	B	B	2	68





**LANDSAIL**

# LS 588 UHP





## Landsail LS588 UHP

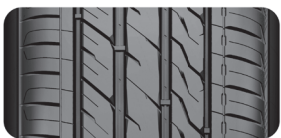
The Landsail LS588 is a passenger car tyre with an optimised tread for the mid-size and entry-level luxury cars.

Special 3-d zigzag sipes help maintain block rigidity by locking together and they create more biting edges for enhanced wet conditions.

The LS588 is the ideal blend of dry road handling, wet road hydroplaning resistance and special 3-D sipes that enhance traction.

Series	65, 60, 55, 50, 45, 40, 35
Rim inches	17, 18, 19, 20, 22
Speed rate	H,V,W, Y
Typical vehicle matches	

Size	XL	Load	Speed				
<b>60 Series</b>							
215/60R16		95	V	C	C	I	68
<b>55 Series</b>							
205/55ZR16		94	W	C	C	I	68
215/55ZR16		97	W	B	C	I	68
225/55ZR16		95	W	C	B	I	68
215/55ZR17		94	W	C	C	I	68
225/55ZR17		101	W	B	B	I	68
<b>50 Series</b>							
205/50ZR17		93	W	B	B	I	68
215/50ZR17		95	W	B	C	I	68
225/50ZR17		98	W	B	B	I	68
245/50ZR18		100	W	C	B	2	69
<b>45 Series</b>							
205/45ZR16		87	W	C	C	I	68
215/45ZR16		86	W	C	B	I	68
205/45ZR17		88	W	C	C	I	68
225/45ZR17		94	W	C	B	I	68
235/45ZR17		97	W	B	B	I	68
245/45ZR17		99	W	C	B	I	69
255/45ZR17		98	W	C	B	2	70
215/45ZR18		89	W	C	B	I	68
225/45ZR18		95	W	B	B	I	68
235/45ZR18		98	W	B	B	I	68
245/45ZR18		100	W	B	B	I	69
255/45ZR18		99	W	C	B	2	70
245/45ZR19		102	Y	B	B	I	69
285/45ZR19		107	W	C	C	I	71
<b>40 Series</b>							
205/40ZR17		84	W	C	C	I	68
215/40ZR17		87	W	C	B	I	68
255/40ZR17		94	W	B	B	2	70
225/40ZR18		92	W	B	B	I	68
235/40ZR18		95	W	B	B	I	68
255/40ZR18		99	W	B	B	I	70
245/40ZR19		98	W	B	B	I	69
255/40ZR19		100	W	B	B	I	70
<b>35 Series</b>							
255/35ZR18		94	W	B	B	I	70
265/35ZR18		97	W	C	C	I	70
215/35ZR19		85	W	C	C	I	68
225/35ZR19		88	W	C	B	I	68
255/35ZR19		96	W	B	B	I	70
225/35ZR20		90	W	B	B	I	68
235/35ZR20		92	W	B	B	I	68
245/35ZR20		95	W	B	B	I	69
255/35ZR20		97	W	B	B	I	70
275/35ZR20		102	W	B	C	I	70
<b>30 Series</b>							
255/30ZR19		91	Y	C	B	I	70
245/30ZR20		90	W	C	B	I	69
245/30ZR20		97	W	B	B	I	69
275/30ZR20		97	W	C	C	I	70
225/30ZR22		89	W	B	C	I	68
235/30ZR22		90	W	B	B	I	68
245/30ZR22		95	W	B	B	I	69
<b>25 Series</b>							
285/25ZR22		99	W	C	C	I	71



### Silica formula

Much more silica in tread is formulated to improve its grip, braking, traction and low rolling resistance.



### More sipes and grooves of outside

More sipes and grooves design help provide perfect hydroplaning resistance.



### Four wide main grooves

Four wide longitudinal grooves can highly evacuate water to enhance steering, braking and hydroplaning resistance.



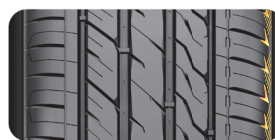
### Specific step-edge blocks

Both of inside and outside specific step-edge blocks help provide strong gripping force.



### Large blocks of outside

Large blocks of outside design help deliver enough dry traction, excellent steering and sports performance.



### Advanced Shoulder design

Specific shoulder design can not only reduce wind resistance, but also dissipate heat.



# LS 988





## Landsail LS988

The Landsail LS988 is an Ultra High Performance tyre of very high quality.

The special V-tread shaped by the transverse grooves increases the grip on both dry and wet road surfaces and guarantees reliable handling and braking. The central transverse grooves guarantee excellent road holding, also at high speeds.

The special S-shape of the tread increases the overall grip. The robust shoulders of the tyre with grooves at a slight angle provide more stability when taking bends at high speeds. The Landsail LS988 was specially developed for large and fast medium-range cars and vehicles in the top segment.

Series	30, 35, 40, 45, 50, 55
Rim inches	16, 17, 18, 19, 20
Speed rate	V, W, Y
Typical vehicle matches	



### Bars for straight-line driving

Continuous circumferential blocks ensure for straight-line stability at high speed.



### "V" shape tread pattern design

Provide excellent high-speed performance.



### Lateral grooves

Lateral grooves that forms "V" shape tread blocks improve wet grip capability, and ensure for confident braking performance.

Size	XL	Load	Speed				
<b>55 Series</b>							
225 / 55 R17		101	W	C	B	2	71
255 / 55 R18		109	W	B	B	2	72
<b>50 Series</b>							
225 / 50 R16		92	W	C	C	2	71
205 / 50 R17	XL	93	W	C	C	2	71
225 / 50 R17		98	W	B	C	2	71
245 / 50 R18		100	W	B	C	2	71
<b>45 Series</b>							
205 / 45 R17	XL	88	W	C	C	2	71
215 / 45 R17		91	W	C	C	2	71
225 / 45 R17		94	W	C	B	2	71
235 / 45 R17		97	W	B	B	2	72
245 / 45 R17		95	W	C	B	2	72
255 / 45 R18		99	W	B	B	2	72
<b>40 Series</b>							
205 / 40 R17		84	W	C	C	2	71
215 / 40 R18		89	W	C	B	3	73
235 / 40 R18		97	W	B	B	2	72
235 / 40 R19		96	W	B	B	2	72
<b>35 Series</b>							
215 / 35 R18		84	W	C	B	3	73
235 / 35 R19		91	W	C	B	2	72
245 / 35 R19	XL	97	W	B	B	2	72
225 / 35 R20	XL	93	W	B	B	2	71
<b>30 Series</b>							
245 / 30 R20	XL	97	W	B	B	2	72



### "S" SHAPE SIPE DESIGN

"S" shape sipe matches the tread pattern. More importantly, the sipes can improve the grip between tread blocks and road surface.



### Crisp cornering shoulder design

Ensure for controllability, and cornering safety, especially at high speed.



### Bars in shoulder area resist irregular tread wear





# LSV 88





## Landsail LSV88

The Landsail LSV88 is a sturdy van tyre that can stand hard wear.

The special rubber compound, the strong carcass and the balanced tread guarantee optimal performance when carrying maximum load.

Moisture and dirt are dispersed effectively and maximum grip is retained as a result. The extra reinforced tyre shoulders also ensure stable handling in the bends.

A repetitive S-tread on the edges of the shoulders helps to evacuate the heat of the tyre created by the contact of the tyre with the surface. The Landsail LSV88 is a reliable delivery van tyre.

Series	65, 70, 75
Rim inches	15, 16,
Speed rate	S, T
Typical vehicle matches	Lexus LX470 Land Rover Ford Expedition Mercedes-Benz, ML320, ML430 BMW X5 Nissan Pathfinder Hummer, H2, H3 Jeep Grand Cherokee



### Heat-releasing shoulder

Continuous "S" groove to improve heat-releasing ability.



### Staggered siping

Improve braking ability.

Size	XL	Load	Speed				
<b>75 Series</b>							
185 / 75 R16		104/102	S	E	C	3	73
215 / 75 R16		113/111	S	E	C	3	73
<b>70 Series</b>							
195 / 70 R15		104/102	S	E	C	3	73
205 / 70 R15		106/104	S	E	C	3	73
215 / 70 R15		109/107	S	E	C	3	73
225 / 70 R15		112/110	S	E	C	3	73
<b>65 Series</b>							
205 / 65 R15		102/100	T	E	C	3	73
195 / 65 R16		104/102	T	E	C	3	73
205 / 65 R16		107/105	T	E	C	3	73
215 / 65 R16		109/107	T	E	C	3	73
225 / 65 R16		112/110	T	E	C	3	73
235 / 65 R16		115/113	T	E	C	3	73



### Tractive longitudinal grooves

Improving hydroplaning resistance while enhancing the tire traction.



### Compact shoulder

Enhance the shoulder stability, optimize high-speed cornering performance.





# CLV 2





## Landsail CLV2

The Landsail CLV2 is a summer tyre specially designed for Crossovers & SUVs.

The special rubber compound, the extra reinforced base and the tread design guarantee reliable and predictable handling of large SUVs.

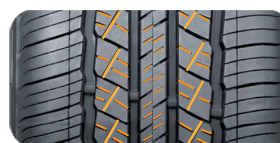
The sturdy and extra wide central tread line guarantees stable handling and optimal braking. The 4 longitudinal grooves ensure powerful performances on wet road surfaces and when taking bends at high speeds. The extra wide shoulders provide more contact with the road surface, creating more stability. The Landsail CLV2 is a class in itself in SUV tyres.

Series	60, 65
Rim inches	16, 17, 18
Speed rate	V, H
Typical vehicle matches	Lexus LX470 Land Rover Ford Expedition Mercedes-Benz, ML320, ML430 BMW X5 Nissan Pathfinder Hummer, H2, H3 Jeep Grand Cherokee



Size	XL	Load	Speed				
<b>70 Series</b>							
215 / 70 R16		100	H	E	C	3	73
235 / 70 R16		106	H	E	C	3	73
265 / 70 R16		112	H	C	C	3	73
<b>65 Series</b>							
225 / 65 R17		102	H	E	C	3	73
235 / 65 R17		108	H	E	C	3	73
245 / 65 R17		107	H	C	C	3	73
255 / 65 R17		110	H	C	C	3	73
265 / 65 R17		112	H	E	C	3	73
235 / 65 R18	XL	110	H	C	C	3	73
<b>60 Series</b>							
235 / 60 R16		100	H	E	C	3	73
235 / 60 R18		107	V	E	C	3	73
265 / 60 R18	XL	114	H	C	C	3	73
<b>55 Series</b>							
235 / 55 R18	XL	104	V	C	C	3	73
255 / 55 R18	XL	109	W	C	C	3	73
<b>50 Series</b>							
235 / 50 R18	XL	101	W	E	C	3	73

### Optimized design of lateral and longitudinal grooves



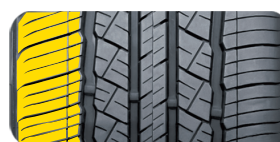
Increased contact area give an extra grip ability, enhance controllability and braking performance.

### 4 main wide longitudinal grooves



4 main wide longitudinal grooves enhances water evacuation, improve cornering and handling performance on wet ground .

### Continuous and inseparable shoulder design



Extensive sipes design enlarge rubber-to-road contact area, improve the cornering controllability and stability, especially at high speed.

### Solid continuous centering rib



Center solid rib improve high straight-line stability while the small lateral grooves provide optimal braking performance.



# LS 588 SUV





## Landsail LS588 SUV

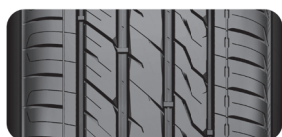
The Landsail LS588 SUV is a type of LS588: same profile, different size line-up and a more robust construction for the SUV variety.

Special 3-d zigzag sipes help maintain block rigidity by locking together and they create more biting edges for enhanced traction.

The LS588 is the ideal blend of dry road handling, wet road hydroplaning resistance and special 3-D sipes.

Series	65, 60, 55, 50, 45, 40, 35
Rim inches	17, 18, 19, 20, 22
Speed rate	H, V, W, Y
Typical vehicle matches	

Size	XL	Load	Speed				
<b>65 Series</b>							
255 / 65 R16		109	H	C	B	2	73
225 / 65 R17		102	H	C	B	2	69
265 / 65 R17		112	H	C	B	2	70
<b>60 Series</b>							
215 / 60 R17		96	H	E	B	2	69
235 / 60 R18		107	V	C	B	1	69
255 / 60 R18		112	H	C	B	2	73
265 / 60 R18		110	V	C	B	2	70
275 / 60 R20		115	V	C	B	2	70
<b>55 Series</b>							
235 / 55 R18		104	W	C	B	1	69
235 / 55 R19		105	W	C	B	1	69
255 / 55 R19		111	V	C	B	2	73
275 / 55 R19		111	V	C	B	2	70
275 / 55 R20		117	W	C	B	1	70
<b>50 Series</b>							
255 / 50 R19		103	W	C	B	2	70
265 / 50 R19		110	Y	C	B	1	70
245 / 50 R20		102	W	C	B	2	69
255 / 50 R20		109	Y	C	B	1	70
265 / 50 R20		111	W	C	B	1	70
<b>45 Series</b>							
255 / 45 R20		105	W	C	B	1	70
265 / 45 R20		104	W	C	B	2	70
275 / 45 R20		110	V	C	B	1	70
285 / 45 R22		114	V	C	B	1	71
305 / 45 R22		118	V	C	B	1	71
<b>40 Series</b>							
275 / 40 R20		106	W	C	B	1	70
295 / 40 R21		111	W	C	B	1	71
265 / 40 R22		106	W	C	B	1	70
305 / 40 R22		114	V	C	B	1	71
<b>35 Series</b>							
315 / 35 R20		110	W	C	B	1	71
265 / 35 R22		102	W	C	B	1	70
285 / 35 R22		106	W	C	B	1	71



### Silica formula

Much more silica in tread is formulated to improve its grip, braking, traction and low rolling resistance.



### More sipes and grooves on outside

More sipes and grooves design provide perfect hydroplaning resistance and all-season performance.



### Four wide main grooves

Four wide longitudinal grooves can highly evacuate water to enhance steering, braking and hydroplaning resistance.



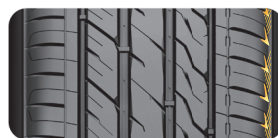
### Specific step-edge blocks

Both of inside and outside specific step-edge blocks help provide strong gripping force.



### Large blocks

Large blocks of outside design help deliver enough dry traction, excellent steering and sports performance.



### Advanced Shoulder design

Specific shoulder design can not only reduce wind resistance, but also dissipate heat.



# **RFT Series**





## Landsail Runflat

The Landsail Runflat Series (RFT) are a select number of tyre types fitted with runflat technology.

The tyres have reinforced sidewalls that can carry the weight of the car, even when there is no air in the tyre.

Due to the design of the tyre you don't feel much difference between a punctured tyre and a tyre with the right pressure. That is why runflat tyres can only be installed on suitable wheels.

You can keep driving when you have a flat tyre, which is not possible with a normal tyre. It is possible to drive a distance of 80 km with an adjusted maximum speed of 80km/h on a Landsail with RFT technology. An empty runflat tyre that has been driven on always has to be replaced.

Type	Width	Height	Inch	Load	Speed	TPMS	EB	EB	EB	EB
LS388	195	55	16	91	W	C	B	I	68	
LS388	205	55	16	91	W	E	B	I	68	
LS588	275	40	20	106	W	E	B	2	71	
LS588	315	35	20	110	W	E	B	I	71	
LS988	225	55	17	101	W	C	C	2	71	
LS988	205	50	17	89	W					
LS988	225	50	17	98	W	C	C	2	71	
LS988	205	45	17	88	W	E	C	2	71	
LS988	225	45	17	94	W	C	B	2	71	
LS988	245	45	18	100	Y	C	B	2	72	
LS988	225	40	18	92	W	E	C	2	71	
LS988	245	45	18	97	W	C	B	2	71	
LS988	255	35	18	94	W	E	B	2	72	

1. A specially reinforced inner wall carries the weight of the car the moment the air pressure drops. The sidewalls of the tyre are extra sturdy, which causes the tyre to retain its shape.
2. Extra carcass layers provide stability when driving on a flat tyre.
3. The silica rubber compound provides extra stability when the pressure is dropping.

Series	55, 50, 45, 40, 35
Rim inches	16, 17, 18, 20
Speed rate	W, Y
Typical vehicle matches	BMW 1 Serie 3 Serie 5 Serie 7 Serie X Serie





# **Winterlander**





## Landsail Winterlander

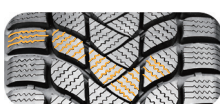
The Landsail Winterlander is a winter tyre developed for passenger cars.

The silica rubber compound ensures the tyre remains flexible, even at very low temperatures. The V-tread, shaped by the transverse grooves, increases the grip on both wet and snowy surfaces and guarantees reliable braking and handling in wintry conditions.

The coarse rubber surface (3D technology) creates extra grip. This helps create better traction on snow and the car remains steerable.

The Landsail Winterlander is a reliable partner in extreme wintry conditions.

Series	65, 60, 55
Rim inches	14, 15, 16, 18
Speed rate	T, H, V



### High Density wavy spring

Greatly increase snow traction, guarantee perfect steering. Optimized direction of sipes, guarantee that each sipe can receive maximum force while contacting road surface, insure safe driving.



### 3-D Sipes Design

3-D sipes with their sipes pacers on the inside of the tire keep the sipes open when they pass through the ground contact area. This makes the sipe fill up with more snow and boosts the amount of extra grip on roads in snow conditions.



### Stiff shoulder blocks

Guarantee cornering stability, improve driving comfort.

Size	XL	Load	Speed				
<b>80 serie</b>							
155 / 80 R13		79	T	C	C	2	71
<b>70 Series</b>							
155 / 70 R13		81	T	C	C	2	71
165 / 70 R14		81	T	C	C	3	73
175 / 70 R14		88	T	C	C	2	71
<b>65 Series</b>							
155 / 65 R13		73	T	C	C	2	71
155 / 65 R14		75	T	C	C	3	73
175 / 65 R14		82	T	C	C	3	73
185 / 65 R14		86	T	C	C	3	73
175 / 65 R15		84	T	C	C	2	71
185 / 65 R15		88	T	C	C	3	73
185 / 65 R15		88	H	C	C	3	73
195 / 65 R15		91	T	C	C	3	73
195 / 65 R15		91	H	C	C	3	73
205 / 65 R15		94	H	C	C	3	73
215 / 65 R16		98	H	C	C	3	73
<b>60 Series</b>							
185 / 60 R14		82	T	C	C	3	73
185 / 60 R15		88	H	C	C	3	73
195 / 60 R15		88	H	C	C	3	73
205 / 60 R16		96	H	C	C	3	73
215 / 60 R16		99	H	C	C	3	73
<b>55 Series</b>							
185 / 55 R15		82	H	C	C	2	71
195 / 55 R15		85	H	C	C	3	73
195 / 55 R16		87	H	C	C	3	73
205 / 55 R16		91	H	C	C	3	73
215 / 55 R16		97	V	C	C	3	73
225 / 55 R16		99	V	C	E	3	73
205 / 55 R17		95	H	C	C	2	72
215 / 55 R17		98	H	C	C	3	73
225 / 55 R17		97	H	C	C	3	73
<b>50 Series</b>							
205 / 50 r17		93	H	C	C	2	72
215 / 50 r17		95	H	C	C	2	72
225 / 50 r17		98	H	C	C	2	72
<b>45 Series</b>							
195 / 45 R16		84	H	C	C	2	72
225 / 45 R17		94	V	C	C	3	73
<b>40 Series</b>							
225 / 40 R18		92	V	C	C	3	73





**LANDSAIL**

# ***Winterstar***





## Landsail Winterstar

The Landsail Winterstar is an SUV winter tyre.

By adding silica to the rubber compound the tyre remains flexible, also at very low temperatures.

The central arrow tread increases road holding and maximises braking on wet and snowy surfaces. The very large longitudinal grooves rapidly disperse water and snow, allowing grip, steering and braking to be maintained.

The coarse rubber surface (3D technology) combined with additional sipes creates extra grip. This helps create better traction on snow and the car remains steerable.

Small tread openings in the shoulders of the tyre prevent the tyre from slipping on a thin layer of water (aquaplaning). The Landsail Winterstar guarantees many safe winter kilometres.

Series	55, 65
Rim inches	17, 18
Speed rate	H, V

Size	XL	Load	Speed				
<b>70 Series</b>							
215 / 70 R16		100	H	C	C	3	73
<b>65 Series</b>							
225 / 65 R17		102	H	C	C	3	73
235 / 65 R17		108	H	C	C	3	73
245 / 65 R17		107	H	C	C	3	73
<b>60 Series</b>							
215 / 60 R17		96	H	C	C	3	73
<b>55 Series</b>							
235 / 55 R17		103	V	C	C	3	73
255 / 55 R18		109	V	C	C	3	73



### Extended center arrow-block

Extended center arrow-block help improve handling and braking stability and deliver a quieter and comfort ride.



### Large directional blocks

Large directional blocks help improve dry and wet grip to bring excellent steering stability.



### Large quantity of silica in tread

Large quantity of silica in tread is formulated to maintain it's grip, braking and traction under extreme cold-winter conditions including snow and ice. You can also enjoy sports and cross-country in cold winter.



### Small holes in the shoulder

Small holes in shoulder can efficiently absorb thin water film on the surface of ice or snow, reducing the risk of aquaplaning efficiently.





# Snowstar





## Landsail Snowstar

The Landsail Snowstar is a winter tyre.

The central longitudinal groove and the 2 zigzag longitudinal grooves ensure rapid dispersion of water and snow, allowing grip, steering and braking to be maintained.

The coarse rubber surface (3D technology) creates extra grip. This helps create better traction on snow and the car remains steerable.

The Landsail Winterlander makes driving in the winter much safer.

Series	70, 65
Rim inches	15, 16
Speed rate	S, T
Typical vehicle matches	VW transporter, Toyota Hi ace, Mercedes-Benz Sprinter, Vito Citroen Jumper, Renault Master, Fiat Ducato, Ford Transit, Opel Movano

Size	XL	Load	Speed				
<b>70 Series</b>							
195 / 70 R15		104	S	E	C	2	73
205 / 70 R15		106	S	E	C	2	73
225 / 70 R15		112	S	E	C	2	73
<b>65 Series</b>							
195 / 65 R16		104	T	E	C	2	73
205 / 65 R16		107	T	E	C	2	73
215 / 65 R16		109	T	E	C	2	73
235 / 65 R16		115	S	E	C	2	73



### THE BEAUTIFUL SHOULDER PATTERN

The beautiful shoulder pattern can not only reduce wind resistance, but also dissipate heat.



### THREE WIDE LONGITUDINAL GROOVES

Three wide longitudinal grooves can highly evacuate water to enhance steering, braking and hydroplaning resistance.



### SAWTOOTH LATERAL GROOVES

Sawtooth lateral grooves help deliver high grip force to maintain steering stability.





# 4-SEASONS





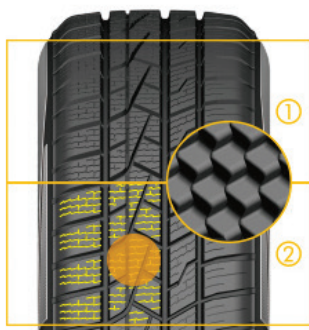
## Landsail 4-seasons

The Land Sail 4-seasons is a technically advanced product. The unique tread design lets the tyre excel in all seasons.

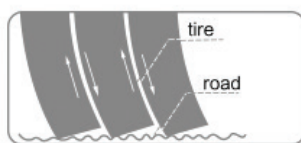
The unique dual tread compound gives good grip in all conditions.

The tyre has the three peak mountain snowflake symbol, which qualifies it as an official winter tyre.

Series	70, 65, 60, 55, 45
Rim inches	13, 14, 15, 16, 17
Speed rate	T, H, V
Typical vehicle matches	



- 1 Exclusive tread design**  
Provides grip in all 4 seasons
- 2 Wave sipes**  
Provides superior traction without sacrificing stability



Size	XL	Load	Speed				
<b>70 Series</b>							
165 / 70 R13		79	T	E	C	2	71
175 / 70 R13		82	T	E	C	2	71
165 / 70 R14		81	T	E	C	2	71
175 / 70 R14		88	T	C	C	2	71
<b>65 Series</b>							
155 / 65 R14		75	T	E	C	2	71
165 / 65 R14		79	T	E	C	2	71
175 / 65 R14		82	T	E	C	2	71
185 / 65 R15		88	H	C	C	2	72
195 / 65 R15		91	H	C	C	2	72
<b>60 Series</b>							
185 / 60 R14		82	H	E	C	2	71
185 / 60 R15		88	H	C	C	2	71
195 / 60 R15		88	H	C	C	2	72
205 / 60 R16		96	H	C	C	2	72
<b>55 Series</b>							
185 / 55 R15		82	H	E	C	2	71
195 / 55 R15		85	H	E	C	2	72
195 / 55 R16		87	H	E	C	2	72
205 / 55 R16		91	V	C	C	2	72
215 / 55 R16		97	V	C	C	2	72
<b>45 Series</b>							
225 / 45 R17		94	V	C	C	2	72



**Comfortable profile design**  
Optimal placement of the tread blocks in the tread reduce resonance in the tread, resulting in a high comfort and low rolling noise



**Three wide lateral grooves**  
Three wide lateral grooves for efficient water drainage, ensuring more control in rain and snow conditions



**Shoulder Profile**  
The shoulder section is specially designed to ensure excellent steering precision



**Crossdesign**  
The interior of the profile creates the unique "cross section" for excellent grip in snow and ice conditions



# 4-SEASONS VAN





## Landsail 4-seasons Van

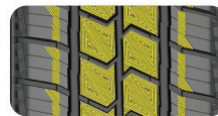
The Land Sail 4-seasons van is a technically advanced product. The unique tread design lets the tyre excel in all seasons.

The unique dual tread compound gives good grip in all conditions.

The tyre has the three peak mountain snowflake symbol, which qualifies it as an official winter tyre.

Series	75, 70, 65
Rim inches	15, 16
Speed rate	
Typical vehicle matches	VW transporter, Toyota Hi ace, Mercedes-Benz Sprinter, Vito Citroen Jumper, Renault Master, Fiat Ducato, Ford Transit, Opel Movano

Size	XL	Load	Speed				
<b>75 Series</b>							
195 / 75 R16		107	R	C	C	2	72
205 / 75 R16		110	T	C	C	2	72
<b>70 Series</b>							
195 / 70 R15		104	R	C	C	2	72
225 / 70 R15		112	S	C	C	2	72
<b>65 Series</b>							
195 / 65 R16		104	R	C	C	2	72
205 / 65 R16		107	T	C	C	2	72
215 / 65 R16		109	T	C	C	2	72
225 / 65 R16		112	S	C	C	2	72
235 / 65 R16		115	R	C	C	2	72



### Anti-slip micro groove

The special micro-grooves in the central area increase road contact, which makes for an excellent grip.



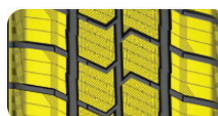
### longitudinal grooves

Three wide longitudinal grooves for efficient water drainage, prevents aquaplaning.



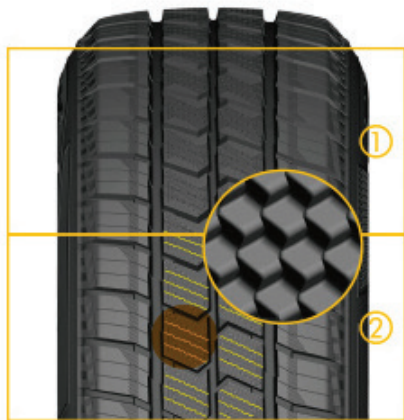
### Deep transverse grooves

Provide increased mileage.



### Block design

The solid blocks in the profile provide stability, control and safety.



- 1 Exclusive tread design**  
Provides grip in all 4 seasons
- 2 Wave sipes**  
Provides superior traction without sacrificing stability



For more information, please check [www.landsailbanden.nl](http://www.landsailbanden.nl)